

# FACADESXi

## Xi-HACIENDA SAND FINISH

### DESCRIPTION AND USAGE

Xi-Hacienda Finish is a Decorative Cement Stucco Finish for sand float finish with many different texture options. Made of all natural earthen materials this finish will produce a unique look for commercial and residential construction.

Mix with Xi-Admix & Bonding Agent for increased strength, increased water resistance, reduced cracking, and reduced efflorescence.

### PACKAGING / COVERAGE

90 lb. (40.8 kg) bag

#### Estimated Coverages:

The estimated coverage area per bag is based on the condition of the surface. The following is approximate coverage based on the 2 Coat method of application:

#### Xi-Hacienda Sand

Float Finish: 140-160 ft<sup>2</sup> (13-14.9 m<sup>2</sup>)

Dash Finish: 90-130 ft<sup>2</sup> (8.3-12. m<sup>2</sup>).

Machine Dash Finish: 70-100 ft<sup>2</sup> (6.5-9.2)m<sup>2</sup>

Coverage may vary due to ambient temperature, surface temperature, surface porosity, mixing methods, and/or application methods. coverage should be based upon a mock up depending on desired texture.

### FEATURES / BENEFITS

- Economical
- Low maintenance
- Low VOC
- No Painting Required.
- Integrally colored & textured
- Durable
- Low Maintenance
- UV Resistant
- Face Resistant
- Non combustible

### FOR USE WITH ALL FACADESXi SYSTEMS

Acceptable Substrates:

- FacadesOne and FacadesThree Stucco
- Direct to Clean CMU/Concrete, stucco or brick
- Existing un-painted Stucco
- Xi-VersaBase (requires Xi-Admix & Bonding Agent in the Hacienda Finish)

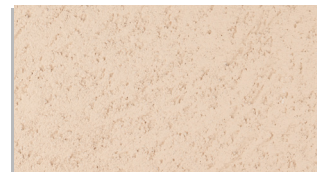
### TEXTURE EXAMPLES

Available in Light Base and Dark Base.

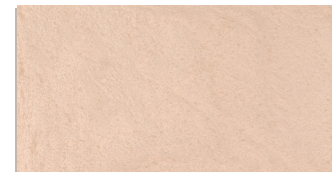
- Xi-Hacienda Finish comes in standard colors and may be colored in the field with Xi-ColorSure Packs.
- Xi-ColorSure can be added to Xi-Hacienda Finish - up to 4 packs per bag of Hacienda Finish to achieve different depths of each color.

Color Matching with minimum quantities is available.

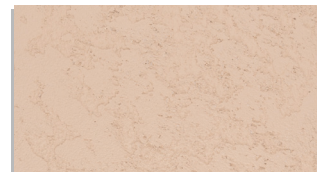
Float Finish



Castroville Float Finish



Knock Down



Skip Trowel



### SHELF LIFE

12 months - stored off the ground, unopened, protected from moisture, extreme heat 90°F (32°C), and direct sunlight.



# FACADESXi

## Xi-HACIENDA SAND FINISH

### MIXING

Read the complete instructions prior to mixing.  
This is not a stucco base material – Xi-Hacienda Sand Finish will be applied at approximately 1/8" thick

1. Measure exact amounts of water and Xi-ColorSure used per bag of Xi-Hacienda Finish. Slight variations in water and color will affect the color uniformity.
2. Using a mechanical plaster mixer, start with approximately 3 gallons of cool clean water per bag.
3. If Xi-Admix & Bonder is being used replace 1/2 gallon with the admix per bag.
4. Add the entire 90-pound bag of Xi-Hacienda Smooth Finish and mix until smooth and lump free, with a thin consistency.
5. Add Xi-ColorSure packs. You may mix anywhere from 1-4 (1 lb packs) per bag of Xi-Hacienda Smooth depending on your desired color depth. Mix until color is evenly dispersed, approximately 1 to 2 minutes.
6. Allow the material to slake and begin the initial set for 10-15 minutes
7. Reengage the mixing blades adding only enough water to allow the mixture to be uniform throughout.
8. Use the mixture immediately after mixing

When changing colors, wash out the mixer completely before proceeding.

Working time is approximately 1 hr depending upon temperature - do not mix more than can be used during this time.

### SURFACE PREPARATION / JOB CONDITION

Temperature and substrate must be 40°F (4.4°C) and above at time of installation and for 48 hours after installation. Avoid application in direct sunlight or high temperatures. Hot weather may have negative effects on the look of your finished project and reduce floating open time. Substrates must be unpainted and clear of dirt, dust, chalk, mildew, algae, foreign materials, etc.

- Clean up surface area by removing dirt, dust, and debris prior to application.
- Clean and repair any surface damage.
- Scrape down painted surfaces to remove any loose chips.
- Xi-Hacienda Finish cannot be used to level out or repair an uneven surface - The level of the substrate will determine the texture of the Hacienda Finish

#### New Stucco Surface Preparation:

- After application of the portland cement plaster base coat/brown coat; rod, darby or trowel it to produce the level desired.
- Cement finish will require an "open" base coat, any dense areas should be floated.
- FacadesOne & FacadesThree, Portland Cement based plaster: Moist cure for 48 hours and allow to dry for 5 days

MOIST CURING AND DRYING IS THE MOST IMPORTANT STEP IN STUCCO APPLICATION. THE LONGER THE STUCCO WALL CAN BE MOIST CURED AND DRIED BEFORE APPLICATION OF A CEMENT FINISH, THE LESS CRACKING AND BETTER THE HACIENDA FINISH APPEARANCE WILL BE.

#### Xi-VersaBase Preparation

- Dried 24 hours. Xi-Hacienda Finish must be mixed with Xi-Admix & Bonding Agent before installing.

#### Concrete/Masonry Preparation

- Any newly laid concrete surfaces or masonry work must wait a minimum of 28 days before the product is applied
- Form-release agents. Dirt, efflorescence frost, and any bond breakers must be removed prior to application
- Patch and repair any non-uniform areas to create as smooth surface and allow to dry.
- Check and treat all concrete surfaces for alkalinity, which should be less than 10.
- Planar irregularities must be limited in accordance with the project specifications. Irregular and uneven surfaces should be filled.
- The plaster/concrete surface will partially determine the texture, color and final result of Xi-Hacienda Smooth Finish.
- Protect the wall assembly if needed during installation from water intrusion until the exterior wall is in place.

For surface preparation questions or further information, contact the FACADESXi Technical team.



# FACADESXi

## Xi-HACIENDA SAND FINISH

### CAUTIONS / LIMITATIONS

- Xi-Hacienda Finish will have noticeable hairline cracks, texture variations and mottled appearance. If this is not the desired look, a different material should be chosen.
- Before applying product, apply a sample and allow to cure for color approval.
- Repeated troweling may lead to spider cracking, The repeated troweling application technique will have varied outcomes depending upon the methods used and results are not guaranteed.
- The finish will sometimes contain small piece of material such as lime, pigment, or cement due to the normal manufacturing process. This may result in color streaks or spots if the material is over troweled. The applicator may remove the undesirable material during application, or the finish may be repaired after installation.
- Always use proper safety equipment when handling this product. Use a particle mask when mixing and/or applying.
- Air and surface temperature should be at least 40°F throughout the application and drying process. Supplemental heat may be necessary as needed.
- Application surfaces must be sound, clean, dry, free from paint, contaminants, and any residue that may prevent product from bonding to substrate.
- Avoid application in direct sunlight or high temperatures. Hot weather may have negative effects on the look of your finished project and reduce floating open time.
- Cracking will occur in portland cement stucco. This statement is true of any Portland cement based product and is not a defect of the product.
- Efflorescence is a natural occurrence when using cement based products subject to exterior or wet environments.
- No additives are permitted to any components unless specifically approved by FXI.
- For use on vertical above grade walls only. Not for use below grade, horizontal or immersion conditions

### CLEAN UP

Clean tools and equipment with water immediately after use. Dried material can only be removed mechanically.

### CAUTIONS / LIMITATIONS

A mock up of the Xi-Hacienda finish installed in the same temperature, mix ratio and application method is essential. Small samples will rarely represent exactly what how the final product will appear. The mockup must be approved by the owner prior to installation.

#### Hand Application

1. Prior to application of Xi-Hacienda Finish, dampen the stucco base coat with clean water to control and equalize the suction, allowing surface moisture to dissipate before applying the finish.
2. Apply a first coat and immediately apply the second coat.
3. Before the second coat has dried, using circular, uniform and consistent motion, float the surface to bring the sand particles to surface.
4. An absolute minimum of water should be used in floating as it will change the color of the finish.

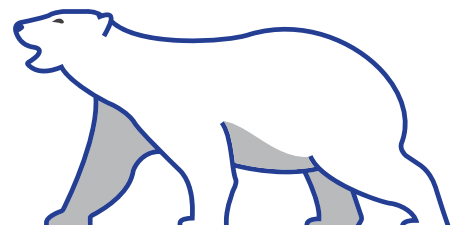
#### Machine Sprayed Application

1. Begin spraying material from one corner to the other without stopping at a uniform thickness.
2. Allow the first coat to dry before applying the second coat.
3. Spraying may require 3 coats depending on the texture.

Additional surface textures can be achieved with a brush or trowel, contact FXI Technical Services.

#### Best Practices for Application

- In hot or dry weather conditions use a light misting of water over the stucco finish.
- Moist Cure Portland cement paster base coat.
- Avoid overlapping new Xi-Hacienda Finish stucco over previously dried Hacienda Finish areas as this will result in a lack of color uniformity.
- Maintain a uniform application thickness.
- Maintain the exact mix ratio for every batch.
- Use additives only after consulting FACADESXi technical support.
- A sufficient number of plasterers is critical to keep a wet edge and limit cold joints.



# FACADESXi

## Xi-HACIENDA SAND FINISH

### WARNINGS

Use of this product can expose you to Crystalline Silica, a chemical that has been known to the State of California to cause cancer, birth defects, or other reproductive harm. For more information: <https://P65Warnings.ca.gov>

### INHALATION

This product is considered an irritant if proper precautions aren't followed. Use a NIOSH approved respirator mask and adequate ventilation when using the product. Avoid overexposure. Open windows and doors to confined areas during the application and drying process. Ensure fresh airflow is available. Leave the area of application immediately if you experience watery eyes, dizziness, or a headache.

### SKIN CONTACT

Do not get product in your eyes or on your skin. Wash hands thoroughly after use.

### EYE CONTACT

Rinse eyes thoroughly with water for several minutes. Remove contact lenses then continue to rinse.

### DO NOT TAKE INTERNALLY

Immediately contact the Poison Control Center if swallowed. Store product in its original container sealed tightly after use.

### EXPOSURE TO LEAD

Scraping sand or old paint chips may result in toxic lead exposure. Contact the National Lead Information Hotline at 1-800-424-LEAD or head over to <https://epa.gov/lead> for more information.

### PLEASE NOTE

The most current Safety Data Sheet and Product Data Sheet can be found on our website for more information on product handling.

### SAFETY

KEEP OUT OF REACH OF CHILDREN.  
FOR PROFESSIONAL USE ONLY.  
DO NOT ALLOW PRODUCT TO FREEZE.  
VOC < 10 grams per liter.

The instructions for use and application and warnings have been prepared in good faith based on the information available at the time of publication.

All instructions are intended to provide product users with the proper guidelines for use and application under normal working and environmental conditions. Because each project and user is different, FACADESXi cannot be held responsible for any consequences of variations in conditions or for unforeseen conditions when using this product.

For the most up to date information go to [www.facadesxi.com](http://www.facadesxi.com)

